



Peacehaven
Community
School

Aspire • Believe • Contribute • Achieve

PCS Student Leadership

Edition 1

Welcome

Hello! Welcome to our first school newsletter! Here we will update you on upcoming events, things to get involved in and to let you know about what our student leaders are talking about in our meetings.

Our main focus is on how we can make our school a happy, safe community for everyone.

The student leadership team will release a newsletter once a term to celebrate the past term and update you for future terms to come.

**The newsletter is written
by students for students.**

We hope you enjoy reading this newsletter and any suggestions or questions about any topics included here please speak to your Student Leadership Team, the Mental Health and Wellbeing Ambassadors, The Eco team or your Student President Rhys and Vice President Amber. They can also be contacted by email:

PCS_Studentleaders@swale.at



Don't forget to change your clocks this weekend. Clocks go back one hour on Sunday 27th October at 2:00am.



Black History Month Competition

Celebrate Black History Month at Peacehaven Community School!

We're inviting all students to research and showcase a Black British historical figure who inspires you. Whether you prefer posters, models, poems, or songs, your creativity is the limit!

Choose a figure from British Black History and share their story with our school community. Focus on their life, achievements, and the impact they made on British society.

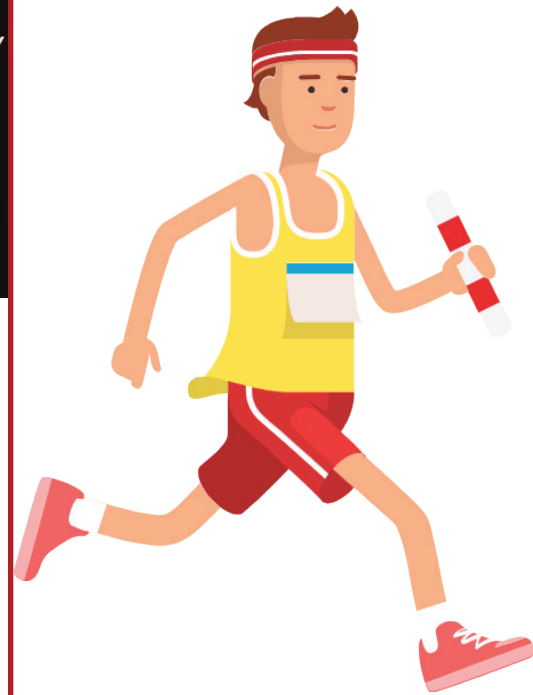
A winner will be chosen from each year group, and the winning entries will be featured in a special Black History Month display.

Prizes will be awarded to the winners!

Let's come together to celebrate the rich contributions of Black British individuals throughout history.



PCS Park Run



Looking for ways to support your own Mental health and Wellbeing?

Fancy improving your fitness?

Looking for an opportunity to socialise?

Come and join us!

Every Friday on the school field. Wear school pe kit but bring in school uniform to change into before lesson 1.

Starts from 8am, join your teachers for a run/walk/jog around the school field every Friday morning!

Did you know?

You can get 5 House points each time you participate in Park Run.



Peacehaven
Community
School

Aspire • Believe • Contribute • Achieve

PCS Student Leadership

Edition 1

Pumpkin Carving Competition



Carve a pumpkin and be in with a chance to win a prize! Carve a pumpkin at home and email a photo of your creation to Mr Desborough to be judged:

gavin.desborough@swale.at

Please note that your picture has to include you standing next to your pumpkin with evidence of the day you made it, this could be a newspaper released on that day or your tv that shows date and time, your tutor group, your house and your name. Anyone who enters gets house points.

Prizes will be awarded to the most creative pumpkin design. Winners will be announced by the student leadership team. Good Luck!

Joke Corner

What do you get if you divide the circumference of a pumpkin by its diameter?

Pumpkin Pi

Winter Fair

The student leaders are organising our first ever student winter fair to be held in December. Everybody has a chance to get involved. Each Tutor group will be hosting a stall and all proceeds will go to our chosen charity for 2024 - 2025.

Listen out for more details at the start of next term. Are you a fan of art? Can you make festive nails or hair braid? Can you make your own sweetie bags? Bake delicious cakes/biscuits? Do you have any good ideas for raffles? Simple games to win prizes?

Get Involved

This year we want as many students to contribute to school life. Our job as student leaders is to find as many ways as we can to help you do just that.

At PCS we have many opportunities such as Inter-house Competitions, clubs, Student Leadership roles, Transition Leaders, Eco - Climate Ambassadors, Mental Health and Wellbeing Ambassadors, charity events DofE, Learning Beyond the Curriculum week, School trips to name but a few.



It is a great way to meet people with similar interests to you, learn new skills and have fun! Last year we had our second PCS academic and community awards evening where students were invited to receive an award.

These included students who excelled in a specific subject, made significant progress, contributed to the wider community, literacy awards and Student Of The Year.

The Student Of The Year award is presented to someone who is kind, follows the rules, someone who contributes, someone who is proud to be part of PCS.



Could you be presented with an award this year? So what are you waiting for? Do something to get involved this year.

Coming Soon...

Bugsy Malone
**Wednesday 11th, Thursday 12th
& Friday 13th December**
6:30pm Start
Ticket prices:
Student/Child £3
Adult £6 (this might change)



Introducing your Student President & Vice President



1. Name of Primary School:

Rhys: The Minster Junior School

Amber: I attended Meridian Community Primary School until 2020, where I began my journey in education and discovered my passion for leadership and community involvement.

2. Why did you want to be President / Vice President?

Rhys: I wanted to become student president to help convey the ideas of the students and improve the quality of life for them.

Amber: I wanted to be your Student Vice President to advocate for all students and enhance various aspects of school life. This role allows me to collaborate with students and staff to create positive changes within our school community, which ultimately makes a difference to everybody at PCS.

3. The school values are Aspire, Believe, Contribute, and Achieve. Can you give an example of how you display them?

Rhys: I've contributed to PCS Drama events and Sports events.

Amber: Aspire: Since Year 7, I have actively sought opportunities to grow, driven by my goal of working for a leading company like Meta.

Believe: My belief in my abilities has helped me become your Vice President and Town Youth Mayor, which has built my confidence in public speaking, collaboration, leadership skills and more.

Contribute: I have contributed to PCS by performing in various events and being a junior actor at Meridian before joining PCS in 2020. As a climate ambassador since 2022 and as a student leader from year 7, I actively promote sustainability within our local school community, from behind the scenes.

Achieve: I take pride in my achievements, including earning two LAMDA distinctions and being elected as Youth Mayor and Vice President, all whilst working towards a scholarship for the sixth form.

4. What do you plan to do when you leave PCS?

Rhys: When I leave PCS I want to go to BHASVIC college and study 3 A Levels, then join British Airways as a Pilot.

Amber: Upon leaving PCS, I aim to study four A-Levels at Brighton College or Oxford International College Brighton, ultimately aspiring to attend the prestigious l'Université PSL (in Paris) to further my education.



5. What would you like to be doing in 10 years' time?

Rhys: In 10 years time I would like to be a successful pilot working for British Airways

Amber: In ten years, I hope to be pursuing a Master's degree or PhD in Computer Science while collaborating with schools like PCS to inspire students. I aspire to make a significant impact in the tech industry, ideally as a Project Manager at Meta.

6. What advice would you give a current Year 7 student at PCS?

Rhys: Make sure to respect and listen to your teachers, if you form friendships early on it will help you in the future.

Amber: My biggest piece of advice is to seize every opportunity that comes your way.

Join clubs, participate in events, and engage with your peers and teachers.

These experiences will enrich your time at school and enhance your future applications. Also, remember to enjoy the journey, as it's a quick, but a unique time to cherish.



Peacehaven
Community
School

Aspire • Believe • Contribute • Achieve

PCS Student Leadership

Edition 1

Tea & Talk

PCS Student Mental Health and Wellbeing Ambassadors delivered assemblies during the week of World Mental Health Day.

On the last day of the week they invited members of the community in for 'Tea and Talk' and hosted an afternoon of discussions with members of the local community, raising awareness of their role.



Peacehaven
Community
School

Aspire • Believe • Contribute • Achieve

Young Carers

**Next Young Carer Drop is on Friday 6th
December 1.30 - 3.30 pm
in the Main Hall**

Are You a Young Carer?

Are you between
5-18 years old?

Are you responsible for
caring for a family member
with a long term disability,
mental health condition
or substance misuse
issues?

Do you provide
emotional, physical or
practical support?

For more information or if you have any questions or just want to chat look out for our Young Carer Representatives wearing a white pin or speak to Jenna Tucker (Early Help Coordinator) in LS1 or email - jenna.tucker@swale.at

The IMAGO Children and Young People's Coordinator is Emma Ricca - emma.ricca@imago.community - 07703 734764

Alternatively you can contact Young Carer Hub Team directly on 0300 111 1110

Once a term for 2 hours we meet up in school to chill, eat, have fun and much more!



Your Student Leaders

Year 7

Alfie 7T2 Alfriston
Maci 7T1 Alfriston
Laila 7T1 Alfriston
Dylan 7T2 Alfriston
Ava 7T2 Alfriston
Oliver 7T2 Alfriston
Neo 7T2 Alfriston
Edward 7T7 Firle
Anthony 7T8 Firle
Lena 7T7 Firle
Vanessa 7T7 Firle
Riley 7T7 Firle
Isabelle 7T7 Firle
Harvey 7T8 Firle
Max 7T7 Firle
Tommy 7T4 Jevington
Phoebe 7T4 Jevington
Evie 7T3 Jevington
Olivia 7T3 Jevington
Chloe 7T5 Wilmington
Isla 7T5 Wilmington
Maisie 7T6 Wilmington
Evie 7T5 Wilmington
Joey 7T6 Wilmington

Year 8

Skye 8T2 Alfriston
Charlie 8T1 Alfriston
Josh 8T2 Alfriston
Sidney 8T8 Firle
Maya 8T7 Firle
Tianne 8T7 Firle
Olivia 8T8 Firle
Sophie 8T8 Firle
Daisy 8T8 Firle
Atlas 8T4 Jevington
James 8T4 Jevington
Hayden 8T3 Jevington
Jordan 8T6 Wilmington
Callum 8T6 Wilmington
Theo 8T5 Wilmington

Year 9

Sonni 9T1 Alfriston
Kayden 9T1 Alfriston
Ellis 9T1 Alfriston
Riley 9T2 Alfriston
Charlie 9T2 Alfriston

Daniel 9T1 Alfriston
Kayden 9T1 Alfriston
Taylin 9T7 Firle
Grace 9T8 Firle
Bobbie 9T8 Firle
Ollie 9T7 Firle
Lara 9T3 Wilmington
Lucy 9T5 Wilmington
Isla 9T5 Wilmington
Abi 9T5 Wilmington
Chloe 9T6 Wilmington
Monique 9T6 Wilmington

Year 10

Karina 10T1 Alfriston
Abi 10T1 Alfriston
Georgia 10T1 Alfriston
Evie 10T7 Firle
Keira 10T7 Firle
Liv 10T8 Firle
Katelyn 10T4 Jevington
Grace 10T6 Wilmington
Xin 10T5 Wilmington

Year 11

Evie 11T7 Firle
Noah 11T7 Firle
Lacey 11T7 Firle
Ozzy 11T8 Firle
Scarlett 11T7 Firle
Rhys 11T8 Firle
Willow 11T8 Firle
Amber 11T4 Jevington
Alyssa 11T5 Wilmington
Eleanor 11T5 Wilmington

Your Climate Ambassadors

Year 7

Alfie 7T2 Alfriston
Edward 7T7 Firle
Anthony 7T8 Firle
Harvey 7T8 Firle
Max 7T7 Firle
Tommy 7T4 Jevington

Year 8

Skye 8T2 Alfriston
Charlie 8T1 Alfriston
Sidney 8T8 Firle
Myah 8T7 Firle

Tianne 8T7 Firle
Sophie 8T8 Firle
Maisie 7T6 Wilmington
Daisy 8T8 Firle

Year 9

Jordan 8T6 Wilmington
Sonni 9T1 Alfriston
Callum 8T6 Wilmington
Kayden 9T1 Alfriston
Ellis 9T1 Alfriston
Riley 9T2 Alfriston
Charlie 9T2 Alfriston
Daniel 9T1 Alfriston
lara 9T3 Wilmington
Isla 9T5 Wilmington
Chloe 9T6 Wilmington
Monique 9T6 Wilmington

Your Mental Health and Wellbeing Ambassadors

Year 7

Anthony 7T7 Firle
Vanessa 7T7 Firle
Riley 7T7 Firle
Lena 7T7 Firle
Isla 7T5 Wilmington
Isabel 7T7 Firle
Maisie 7T6 Wilmington

Year 8

Myah 8T7 Firle
Tianne 8T7 Firle

Year 9

Ollie 9T7 Firle
Jake 9T7 Firle

Year 10

Karina 10T1 Alfriston
Katelyn 10T4 Jevington
Georgia 10T1 Alfriston
Liv 10T8 Firle
Abi 10T1 Alfriston



Thank You

for reading the PCS newsletter, look out for next term's issue. This was made by the student leadership team.

Remember: If you have any suggestions or things you feel need to be brought up in our meetings, please talk to one of your student leaders, your President or Vice President.

If you have any suggestions related to eco issues please talk your Climate ambassadors.

If you have any suggestions relating to mental health and wellbeing please talk to Ms Waite, Mr Verniol or your Mental Health and Wellbeing Ambassadors.

Written by Olivia E, Year 8 and the student leadership team.

The House Leader Board this term

1st Firle 16399 points
2nd Alfriston 15236 points
3rd Wilmington 15188 points
4th Jevington 14778 points

Well done to all those students in Firle. Who will be next term's winners?



RNLI Fundraisers

PCS Fundraises £1,296.54 for the RNLI Newhaven Lifeboat Station.

The PCS student leadership team put Fundraising as a top priority on their agenda for the last academic year. After deciding that they would like any money raised to go to a local charity, they researched and prepared presentations on all of the local charities to share with the wider school community.

All students and staff were then asked to vote for their chosen charity. Due to our proximity to the sea, as well as some more personal experiences, the RNLI Newhaven Lifeboat station came out top.

The students organised and hosted all of the events which raised our final sum through:

Bucket shaking at the school winter concert.

Donations for refreshments at school events.

A raffle that was held on the last day of the Saturday market held at the Peacehaven Meridian Centre before it closed down.

An Easter Egg hunt that the student leaders invited all of the pupils from our local primary schools to.

A non uniform day - wear only red or yellow.

A bake sale.

A second hand book sale at the Peacehaven Town Climate Fayre in July.

The PCS student leaders would like to thank all the students and their families for their generous contributions.





Extra-Curricular Activities

Before School Activities

Monday to Friday

Breakfast Club, Food hall 8.10 - 8.30am
Independent Study, Library 8.00 - 8.40am
Music Practice, Rooms Open 8.15 - 8.40am
(check with the music base)

Park Run - School Field 8am (**Friday**)

Lunchtime Activities

Wednesday - Crochet, KS4 EN9

Friday - Crochet, KS3 EN5

After School Activities

Monday

Creative Writing, EN9 3:10 - 3:55pm
Girls Football, Field 3:10 - 4:10pm
Pokemon Club, EN8 3:15 - 4:00pm
Geography Intervention, (Y11) HU7 3:10 - 4:10pm

Tuesday

Dance, Dance Studio 3:10 - 4:15pm
Stage Crew, Drama Hall/DT1 3:20 - 4:45pm
Anime & Japanese Culture, EN6 3:10 - 4:30pm
Boardgames, EN6 3:10 - 4:30pm
Chess, EN9 3:10 - 3:55pm
Boys Football, Field 3:10 - 4:10pm
Gardening, Courtyard Garden 3:10 - 4:00pm
Computer Science & Creative iMedia, (KS4) IT2 3:20 - 4:00pm
Eco Club, Library PDI
Film Club, EN6 3:10 - 4:30pm
Geography Intervention, (Y11) HU7 3:10 - 4:10pm
French Intervention, (Y11) LA4 3:10 - 4:10pm

Wednesday

Netball, Courts/Sports Hall 3:10 - 4:10pm
DofE Cookery, FT1 3:10-4:15pm
Geography Intervention (Y11), HU7 3:10 - 4:10pm
Maths Club, (Y7&8) MA6 3:10 - 4:00pm
STEM Club, (KS3) 3:10 - 4:00pm
Art Club, (KS3) AR2 3:10 - 4:00pm
Art Catch Up, (KS4) AR2 3:10 - 4:00pm

Friday

LGBTQ+, EN4 3:15 - 4:00pm
Geography Intervention, (Y11) HU7 3:10 - 4:10pm
Art Catch Up, (KS4) AR2 3:10 - 4:00pm



Peacehaven
Community
School

Aspire • Believe • Contribute • Achieve

PCS STUDENT LEADERS ARE SUPPORTING THE WINTER CONCERT

PCS
WINTER
CONCERT
2024

THURS 21ST NOV

6-8 pm

PCS STUDENTS - FREE
ADULTS - £5
UNDER 16'S - £3

TICKETS AVAILABLE FROM PARENTPAY
IF YOU WOULD LIKE TO PERFORM PLEASE TALK TO
MR HIMSWORTH, MR BROCK OR MR ROBERTS