



Peacehaven
Community School

Parents Information Presentation

Key information and frequently asked questions.



Who do you need to contact?



When your child/children leave primary school there may be a feeling that you don't know who you should speak to in different situations

The most important person in your child's life at PCS will be their form tutor



You should contact them about:

- ✓ social, emotional, friendship or welfare issues
- ✓ general behaviour
- ✓ organisation
- ✓ settling in
- ✓ issues at home that may impact on learning

The Year 7 Tutors are:

Group	Tutor
7T1	Charlotte Dowling charlotte.dowling@swale.at
7T2	Kevin Southgate kevin.southgate@swale.at
7T3	Ellie Kenebel ellie.kenebel@swale.at
7T4	Martha Osborne martha.osborne@swale.at
7T5	Olivia Broadbent-Smith olivia.broadbentsmith@swale.at
7T6	James Attrill james.attrill@swale.at
7T7	Jenny Alborough jenny.alborough@swale.at
7T8	Sam Hamblin sam.hamblin@swale.at

You should contact the subject/class teacher if you:



- have any questions regarding a particular subject
- have a query about homework
- have a question about classes or sets
- have a question about a specific lesson

All contacts can be found on the school website.

You should contact Mrs McCaughan or Mrs Fernee, if.....



- ✓ There are any concerns regarding **patterns** of progress or learning
- ✓ There are concerns regarding **patterns** of behaviour

jane.mccaughan@swale.at
joanne.fernee@swale.at

Other important people:



- Jenna Tucker, Student and Family Support; (jenna.tucker@swale.at)
- Marie Wooten, School Attendance Officer; marie.wootten@swale.at
- Josie Turner, Assistant Head I/C Year 7; Josie.Turner@swale.at
- Medical room Supervisor; Omeya Villaalhussen
omeya.villaalhussen@swale.at

The whole educational system has tightened up on lateness, absence, term-time holidays etc.

Why does the school expect good attendance?

All students must be in school by 8:40 every day and the day will end at 3:00.

Days off school add up to lost learning

175 NON SCHOOL DAYS A YEAR

175 days to spend on family time, visits, holidays, shopping, household jobs and other appointments

<p>190</p> <p>SCHOOL DAYS IN EACH YEAR</p> <p>190 days for your child's education</p>	<p>10 days absence</p> <p>180</p> <p>DAYS OF EDUCATION</p>	<p>19 days absence</p> <p>171</p> <p>DAYS OF EDUCATION</p>	<p>29 days absence</p> <p>A term missed</p> <p>161</p> <p>DAYS OF EDUCATION</p>	<p>38 days absence</p> <p>152</p> <p>DAYS OF EDUCATION</p>	<p>47 days absence</p> <p>143</p> <p>DAYS OF EDUCATION</p>
100%	95%	90%	85%	80%	75%
<p>Good</p> <p>Best chance of success.</p> <p>Gets your child off to a flying start</p>		<p>Worrying</p> <p>Less chance of success.</p> <p>Makes it harder to make progress</p>		<p>Serious Concern</p> <p>Not fair on your child.</p> <p>Court action!</p>	

Research suggests that 90% (or lower) attendance will lead to your child achieving at least one GCSE grade lower than they are expected to achieve.

What do I do if my child is off sick?



1. On day one call **Marie Wooten**, school attendance officer.
2. Call every day after that to notify school about absence.
3. If your child is absent for 3 consecutive days or more the school will call home. After the 3rd day you must provide proof of illness. This can be in the form of a doctor's certificate, a prescription or an appointment card.
4. If your child is absent for five consecutive days we ask that on their return you provide a copy of details of any medical appointments and if medicine was prescribed a copy of the relevant prescription.
5. If your child is off with a gastric bug they can return the day after vomiting.

Finally, if your child requires dental or medical appointments we ask that these are made outside of the school day wherever possible.

Marie Wooten: [01273 581100](tel:01273581100)



The stripes
on the
tie for year
7 this year
2021-2022
will be red
and black



What is the correct PCS school uniform?

- Girls should either wear the regulation school skirt from our on-line uniform supplier, or smart, formal, tailored, plain, black trousers. They must not be tight, lycra, leggings or jeans.
- Boys should wear smart, formal, tailored, plain, black trousers. They must not be jeans or chinos.

<https://www.pcs.kitfor.co.uk/>

What is the correct footwear?

All students must wear black shoes. Trainers and leisure footwear such as Vans and Converse are not acceptable footwear.



What is the correct PCS PE Kit?

PE Kit: Essential Items:

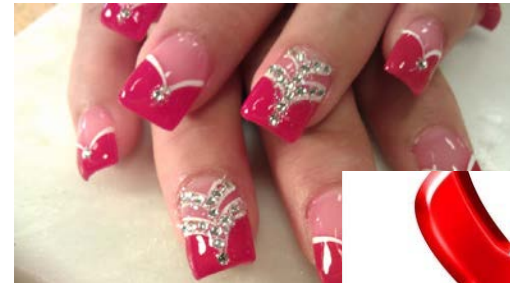
- PCS red polo shirt
- PCS black shorts
- Trainers

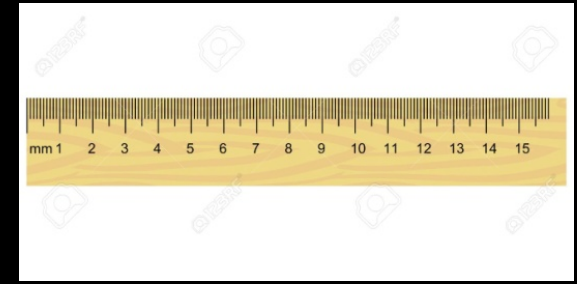
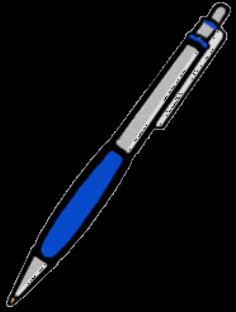


What is the rule for piercings make up, jewellery and nail extensions?



- All jewellery, including earrings must be removed for PE; students can not use tape to cover them up.
- Only one stud per ear is acceptable.
- Nail extensions, false nails and nail varnish are not permitted.





What equipment does my child need?

- A Folder/box file – large enough to carry exercise books and A4 sheets unfolded
- A Reading Book
- A Pen – black or blue
- A Pencil
- A Ruler

Students will also be required to purchase an art sketch book.





What is the rule for mobile phones?



If students have to bring phones into school they should make sure that they are kept in their lockers during the school day. They must not use them in school. This is for safe guarding reasons.



What clubs are available at PCS?

At PCS we run lots of different types of clubs including;

- Sports such as football, rugby, athletics, cricket and basketball clubs.
- Dance clubs.
- Games club.
- Science club.
- Cooking club.
- Music club.
- Homework clubs.



How can I support my child and the school with their transition to PCS?

- ✓ Check that they have their 'Golden 5'
- ✓ Make sure that they are in the correct uniform
- ✓ Help them to manage their homework by using 'show my homework' and homework clubs
- ✓ Encourage them to read at home
- ✓ Get in touch with the relevant person if you have any questions

All information can be found on the Year 6 area on the website